

## CABLE & HOSE PROTECTORS

### Ramps, Bridges, Drop Overs, and Lidded Types



#### Things To Consider When Choosing Protectors For Your Application

1. What are the dimensions and quantity of cables/hoses you want to protect or cover?
2. What type of traffic will be crossing over the cables/hoses?
  - Pedestrian traffic requires high visibility protectors to avoid tripping hazards
  - Type of vehicle will determine which lb/axle rating is needed
3. Do you want a Drop Over Style or Flip Top Style?
  - Drop over covers are lighter, faster, and easier to use
  - Lid covers open and close for adding and removing cables and typically support heavier equipment/vehicles
4. Which material is best for your application, Rubber or Thermoplastic Polyurethane (TPU)?
  - Rubber units are generally less expensive and heavier to transport
  - TPU units are 10 times stronger, lighter, have a higher load bearing capacity, withstand extreme temperature conditions, typically have a longer life than rubber units, and there's no rubber odor
5. Are Connectors Needed?
  - Important if you need to connect multiple protectors together

TYPE OF TRAFFIC	LBS/AXLE RATING
Pedestrian Traffic	Not Rated
Light Vehicles (similar to ATV)	up to 2,100
Cars & Light Trucks	2,000 to 12,000
Heavy Trucks	12,000 to 28,000
Construction & Utility Vehicles	28,000 to 40,000
Heavy Construction Vehicles	over 40,000

**Note: Vehicles must be able to clear height of each unit to avoid damage to vehicle and covered cables or hoses**

# RUBBER HOSE RAMPS & BRIDGES

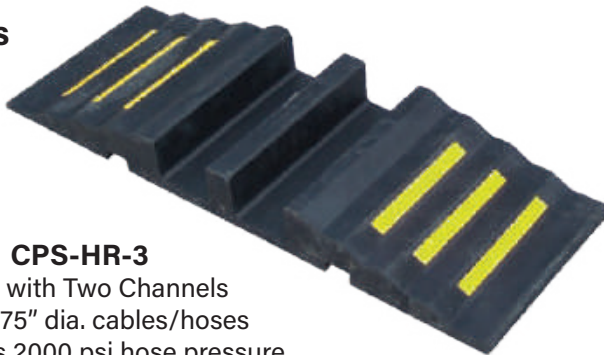
## Rubber Ramps and Bridges

- › Use for larger cables and hoses
- › Durable, abrasion resistant thermoplastic rubber
- › Units are secured together with connectors on both ends
  - won't twist when driven over
- › Most suitable for outdoor use, high traffic areas
- › 1 year manufacturers warranty



3 Hose Ramps Connected with Dog Bone Connectors

## Hose Ramps



### CPS-HR-3

- Ramp with Two Channels
- Up to 2.75" dia. cables/hoses
- Withstands 2000 psi hose pressure
- Embedded reflective yellow stripes
- Includes 2 dog bone connectors
- Must have 4" or more vehicle clearance
- Weight bearing capacity, 44,000 lbs. per axle



### CPS-HR-5

- Ramp with Two Large Channels
- Up to 4.7" dia. cables/hoses
- Withstands 2000 psi hose pressure
- Embedded reflective yellow stripes
- Includes 2 dog bone connectors
- Must have 5" or more vehicle clearance
- Weight bearing capacity, 44,000 lbs. per axle



Back of unit with dog bone connectors attached

## Hose Bridge



### CPS-HCR-4

- Bridge with Two Channels
- Up to 3.75" dia. cables/hoses
- Pre-drilled holed for permanent installations
- Reflective yellow stripes and glass beads
- 1" step increments help to grip tire
- Includes 2 dog bone connectors
- Must have 5" or more vehicle clearance
- Weight bearing capacity, 44,000 lbs. per axle

# FLIP TOP CABLE PROTECTORS

## Rubber Cable Protectors, Flip Tops

- Durable rubber base
- Hinged lids allow for quick set ups and dismantling
- Bright yellow lids made of UV stabilized LLDPE plastic
- Lid has anti-slip surface
  - slip and electrical safety warning symbol molded in
- Interlocking T-Connectors join multiple units together
- Suitable for indoor and outdoor use, all weather conditions
  - no rubber smell
  - extreme temperature rated -40°F to 302°F (-40°C - 150°C)
- 1 year manufacturers warranty



### CPS-CP-10M

Rubber with plastic lid - One Channel  
Up to 1.25" dia. cables  
Weight bearing capacity, 11,000 lbs. per axle



### CPS-CP-5M

Rubber with plastic lid - Two Channels  
Up to 1.125" dia. cables  
Weight bearing capacity, 6,600 lbs. per axle



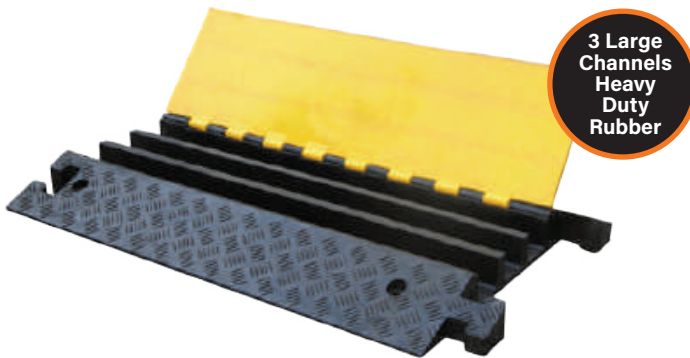
### CPS-CP-7

Rubber - Two Channels  
Up to 3" dia. cables  
Weight bearing capacity, 40,000 lbs. per axle



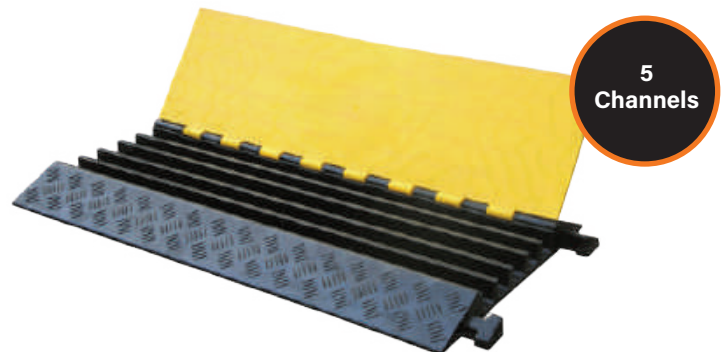
### CPS-CP-9M

Rubber with plastic lid - Three Channels  
Up to 1.125" dia. cables  
Weight bearing capacity, 10,000 lbs. per axle



### CPS-CP-6

Rubber with plastic lid - Three Channels  
Up to 2.5" dia. cables  
Weight bearing capacity, 66,000 lbs. per axle



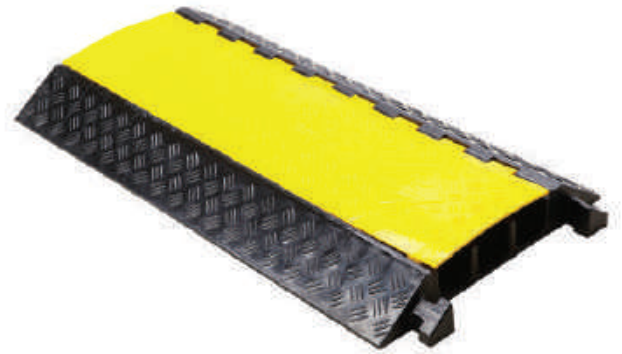
### CPS-CP-2M

Rubber with plastic lid - Five Channels  
Up to 1.375" dia. cables  
Weight bearing capacity, 22,000 lbs. per axle

# FLIP TOP CABLE PROTECTORS

## TPU Cable Protectors, Flip Tops

- ▶ Durable TPU, 10X stronger than rubber
  - material is lighter than rubber, no rubber smell
- ▶ Hinged lids allow for quick set ups and dismantling
- ▶ Bright yellow lids made of UV stabilized LLDPE
- ▶ Lid has anti-slip surface
  - slip and electrical safety warning symbol molded in
- ▶ Interlocking T-Connectors join multiple units together
- ▶ Suitable for indoor and outdoor use, all weather conditions
  - no rubber smell
  - extreme temperature rated -40°F to 302°F (-40°C - 150°C)
- ▶ 1 year manufacturers warranty



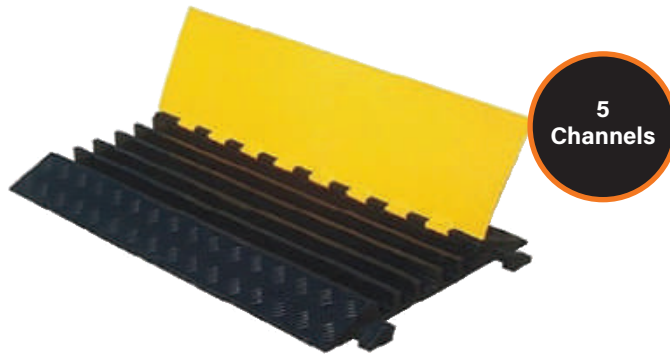
### CPS-BPCP-5S

TPU with plastic lid - Two Channels  
Up to 1.375" dia. cables  
Weight bearing capacity, 11,000 lbs. per axle



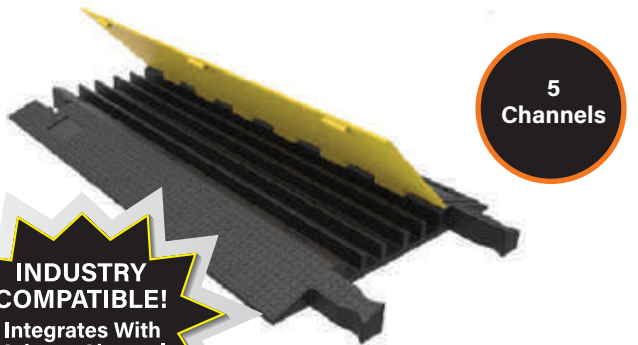
### CPS-BPCP-4S

TPU with plastic lid - Three Channels  
Up to 2.5" dia. cables  
Weight bearing capacity, 44,000 lbs. per axle



### CPS-BPCP-2S

TPU with plastic lid - Five Channels  
Up to 1.5" dia. cables  
Weight bearing capacity, 22,000 lbs. per axle



### CPS-CD-5

TPU with plastic lid - Five Channels  
Up to 1.5" dia. cables  
Weight bearing capacity, 22,000 lbs. per axle

# DROP OVER PROTECTORS

## Cable Protectors, Drop Over TPU

- › Durable TPU material, lighter than rubber
- › Low profile
- › Hidden connectors create a flush fit
- › Interlocking T-Connectors join multiple units together
- › Textured, anti-slip surface
- › Suitable for indoor and outdoor use, all weather conditions
- › 1 year manufacturers warranty



Simply Drop Over  
Cables & Wires



### CPS-NCR-1

One Channel  
Black

Up to 0.625" dia. cables  
Weight bearing capacity,  
2,200 lbs. per axle



Attractive checkered  
pattern on top surface



### CPS-CR-3PU

One Channel  
Yellow

Up to 1.5" dia. cables  
Weight bearing capacity,  
2,200 lbs. per axle



Anti-slip surface



### CPS-NCR-2

One Channel  
Black

Up to 1" dia. cables  
Weight bearing capacity,  
4,400 lbs. per axle



### CPS-NCR-3

Two Channels  
Black

Up to 1" dia. cables  
Weight bearing capacity,  
6,600 lbs. per axle



### CPS-CR-4PU

One Channel  
Yellow

Up to 1" dia. cables  
Weight bearing capacity,  
2,200 lbs. per axle

## Cable Protectors, Drop Over Rubber

- › Heavy duty, durable rubber
- › Low profile
- › Interlocking T-Connectors join multiple units together, flush fit
- › Textured, anti-slip surface
- › Suitable for indoor and outdoor use, all weather conditions
- › 1 year manufacturers warranty



Built-in Carry Handle



### CPS-CR-5

Two Channels  
Black

Up to 1.375" dia. cables  
Weight bearing capacity,  
6,600 lbs. per axle



### CPS-CR-6

Three Channels  
Black

Up to 1.375" dia. cables  
Weight bearing capacity,  
6,600 lbs. per axle

# CABLE/HOSE PROTECTOR COMPARISON

## Rubber Hose Ramps and Bridges, Rubber

ITEM NO.	# CHANNELS	CHANNEL SIZE	COLOR	HEIGHT	WIDTH	LENGTH	WEIGHT	LOAD/AXLE
CPS-HR-3	2	3.5"W x 2.75"H	Black	3.3125"	12"	33.5"	28 lbs.	44,000 lbs.
CPS-HR-5	2	5.9"W x 4.7"H	Black	5.33"	12"	39.75"	48.5 lbs.	44,000 lbs.
CPS-HCR-4	2	3.94" x 3.94"	Black	5"	12"	33.5"	41.875 lbs.	44,000 lbs.

## Flip Tops, Rubber

ITEM NO.	# CHANNELS	CHANNEL SIZE	COLOR & MATERIAL	HEIGHT	WIDTH	LENGTH	WEIGHT	LOAD/AXLE
CPS-CP-10M	1	1.25" x 1.25"	Black w/Yellow Top	1.75"	8.25"	39.375"	12.125 bs.	11,000 lbs.
CPS-CP-7	2	3.74"W x 3.15"H	Black w/Yellow Top	4.13"	24.2"	35.43"	66 lbs.	40,000 lbs.
CPS-CP-5M	2	1.26" x 1.37"	Black w/Yellow Top	1.75"	10"	39.37"	16.5 lbs.	6,600 lbs.
CPS-CP-9M	3	1.18" x 1.18"	Black w/Yellow Top	1.77"	12"	35.43"	19.36 lbs.	10,000 lbs.
CPS-CP-6	3	2.56" x 2.56"	Black w/Yellow Top	2.95"	23.6"	35.43"	55 lbs.	66,000 lbs.
CPS-CP-2M	5	1.5" x 1.38"	Black w/Yellow Top	2.16"	20"	35.43"	35.2 lbs.	22,000 lbs.

## Flip Tops, TPU

ITEM NO.	# CHANNELS	CHANNEL SIZE	COLOR & MATERIAL	HEIGHT	WIDTH	LENGTH	WEIGHT	LOAD/AXLE
CPS-BPCP-5S	2	1.375" x 1.375"	Black w/Yellow Top	1.75"	10"	39.5"	9.25 lbs.	11,000 lbs.
CPS-BPCP-4S	3	2.5" x 2.5"	Black w/Yellow Top	3"	19.625"	35.5"	25 lbs.	44,000 lbs.
CPS-BPCP-2S	5	1.5" x 1.5"	Black w/Yellow Top	2.125"	19.625"	35.5"	18 lbs.	22,000 lbs.
CPS-CD-5 <small>Industry Compatible</small>	5	1.5" x 1.5"	Black w/Yellow Top	2"	19"	35.5"	20 lbs.	22,000 lbs.

## Drop Over, Rubber or TPU

ITEM NO.	# CHANNELS	CHANNEL SIZE	COLOR & MATERIAL	HEIGHT	WIDTH	LENGTH	WEIGHT	LOAD/AXLE
CPS-NCR-1	1	0.75"W x 0.625"H	Black, TPU	0.75"	5.375"	39.625"	2.6 lbs.	2,200 lbs.
CPS-CR-3PU	1	1.5"W x 05"H	Yellow, TPU	0.75"	5.25"	41"	3 lbs.	2,200 lbs.
CPS-NCR-2	1	4.1"W x .98"H	Black, TPU	1.5"	11"	35.625"	7.2 lbs.	4,400 lbs.
CPS-CR-4PU	1	4"W x 1"H	Yellow, TPU	1.1875"	10.625"	39.55"	6.19 lbs.	6,600 lbs.
CPS-NCR-3	2	1.97"W x .98"H	Black, TPU	1.125"	11"	35.625"	7.25 lbs.	6,600 lbs.
CPS-CR-5	2	1.375" x 1.375"	Black, Rubber	1.875"	12"	39.625"	20 lbs.	6,600 lbs.
CPS-CR-6	3	3.75" x 3.75"	Black, Rubber	1.875"	13.752"	39.75"	23.5 lbs.	6,600 lbs.